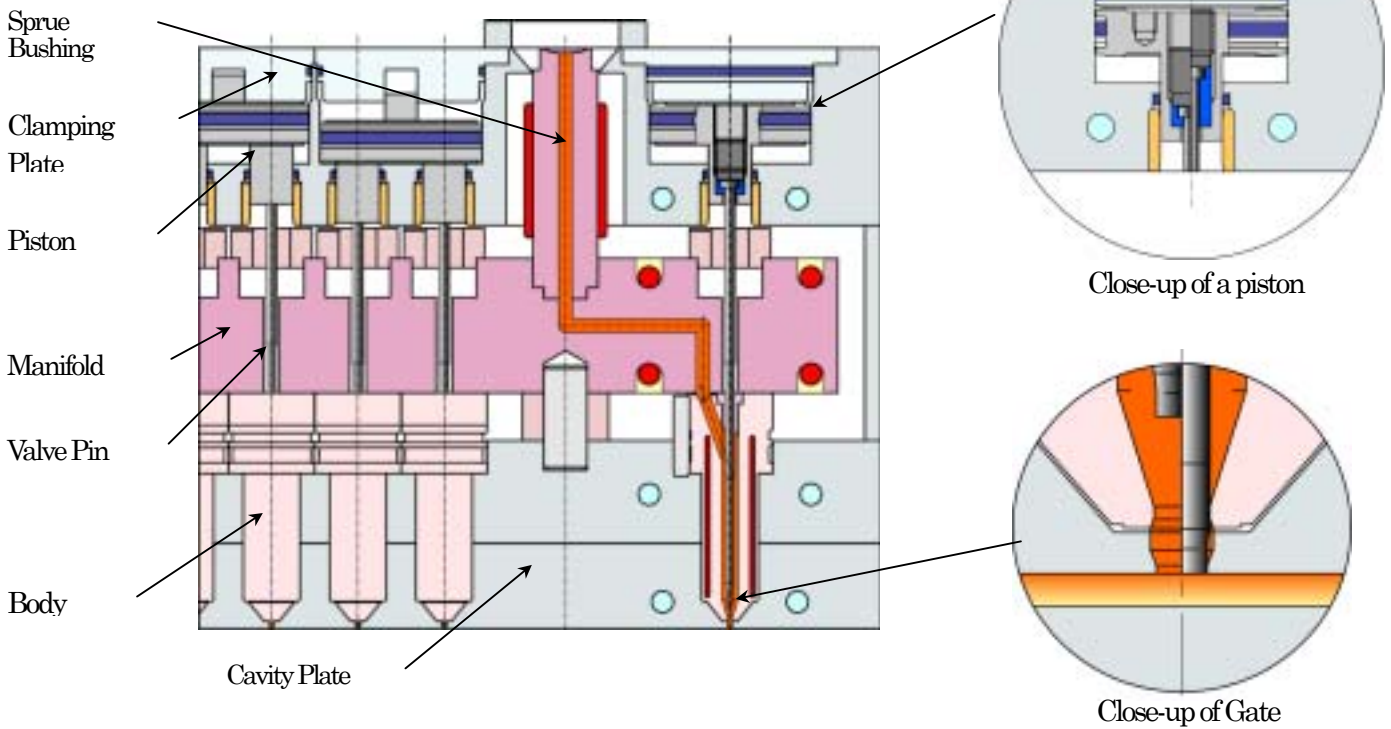
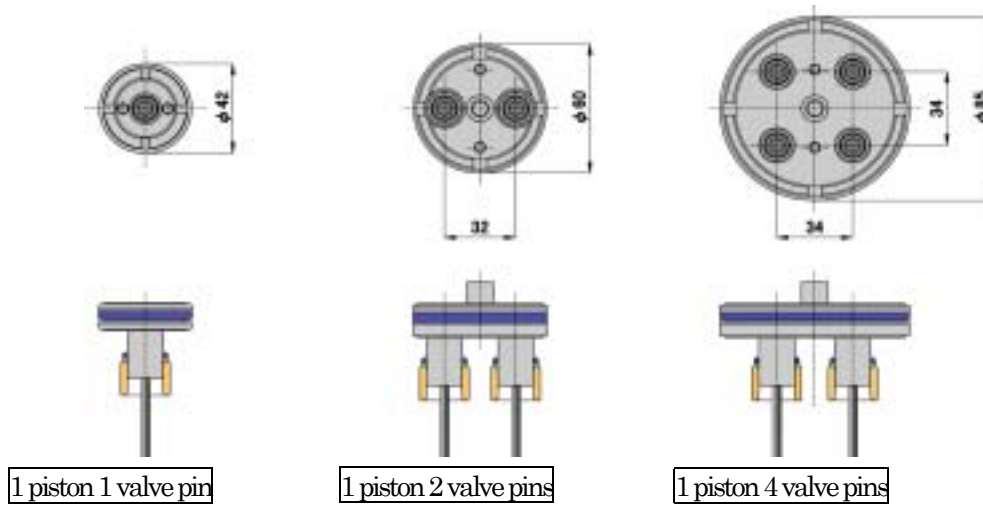


SV32 Compact Valve System

Structures of Hot Runner System



Pistons



Feature

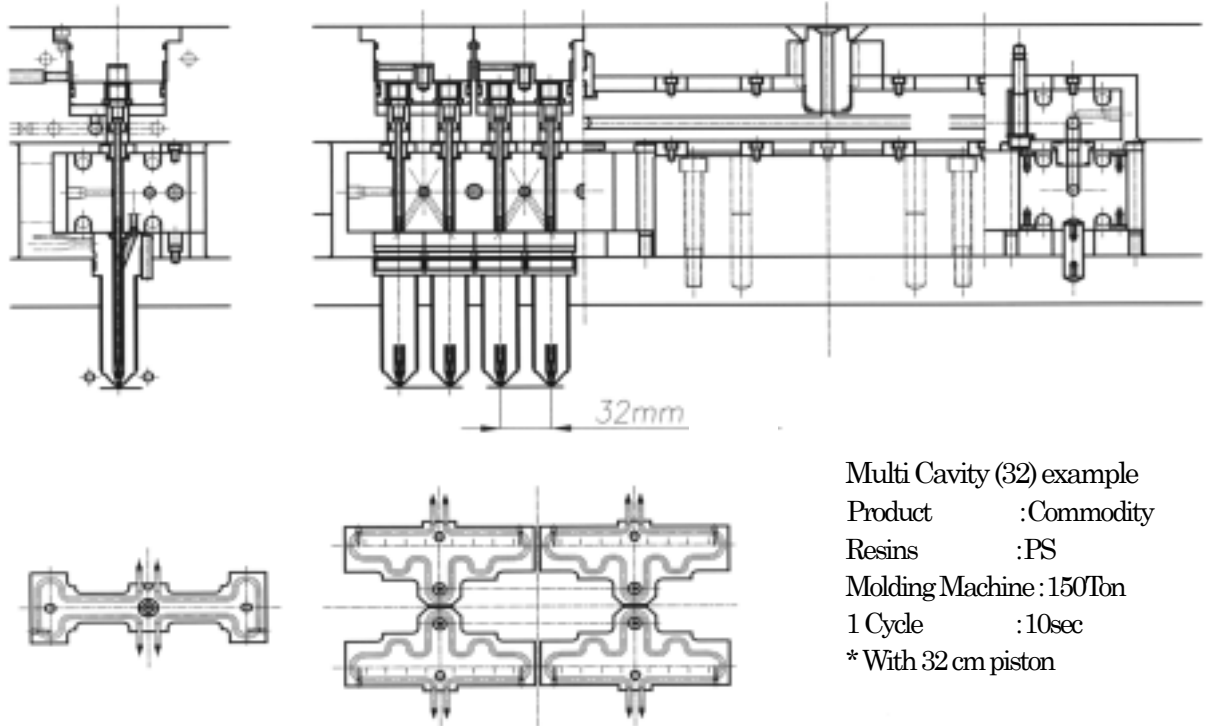
1. Suitable for wide range operations from general resins molding to general engineering plastic molding. (Without Tip Heater)
2. Compact version of SVP model.
 - Minimum pitch: 34 mm (square pitch)
 - Multi cavity with small pitch
3. Reinforced resins can also be processed.
4. "Steady Brace" system on the valve pins.
 - Prevents the gate and pin from wear and tear or damage.
5. Easy adjustment
 - Fine adjustment and change of the valve pin can be done on the molding machine.

Specification

1. Body Heater: (200V to 240V (AC))
2. Controller : Exclusive SH Controller (Consult us for the compatibility of the other manufacture's controller.)
3. Drive Force Air Pressure (5kgf/cm²)

SV32 Compact Valve System

Sample blue print for Manifold



Multi Cavity (32) example
 Product :Commodity
 Resins :PS
 Molding Machine :150Ton
 1 Cycle :10sec
 * With 32 cm piston

Performance Report

Resins	Product Weight(g)	Cavity × Gate	Gate Diameter(mm)	Purpose
PE	2.0	2×2	1.2	Copy Machine Part
PE	2.0	4×4	1.2	Iron Part
LDPE	5.0	24×24	1.0	Milk Cap
LDPE	5.0	24×24	1.0	Container lid
LDPE	5.0	1×1	1.0	Cap
LDPE	2.0	24×24	1.0	Milk Cap
HDPE	8.0	8×8	1.0	Food Container Lid
PP	10.0	8×8	1.0	Cap for Food
PP	11.2	8×8	1.2	Ink Tank the main Body
PP	1.0	8×8	1.0	LBP Part
PP	40.0	2×4	1.6	Case for DVD
PP	1.5	16×16	1.0	Printer Ink Tank
PP	0.4	16×16	1.0	Chimney Cap / Cover
PP	8.0	8×8	1.0	Daily Necessities
PP	8.0	4×4	1.0	Daily Necessities
PP	0.1	4×4	1.0	OA Part
PP	20.0	2×2	1.2	Container
PP	32.0	4×4	1.2	Toner Part
PP	1.5	16×16	1.0	Ink Tank
PP	17.4	2×4	1.2	Daily Necessities
PP	8.0	8×8	1.2	Printer Ink Tank
PP	20.0	12×12	1.2	Food Cap

Resins	Product Weight(g)	Cavity × Gate	Gate Diameter(mm)	Purpose
PP	30.0	4×8	1.6	DVD PP CASE
PP	15.0	6×6	1.6	Contact Lens Case
PP	1.5	16×16	1.0	Printer
PP	3.0	16×16	1.6	Motor Part
PP	30.0	16×16	1.6	Air-Conditioner Part
PP	1.5	16×16	1.6	Printer Part
PS	50.0	2×2	1.6	Case for CD
PS	7.0	4×4	1.2	P- Case
PS	14.8	8×8	1.6	CD
PS	13.0	4×4	1.6	Cup
PS	11.0	4×4	1.2	Medical Care Part
PS	2.3	32×32	1.2	Camera Film Wick
HiPS	28.0	2×2	1.6	CD Tray
GPPS	1.9	12×12	0.9	Cellular Phone
ABS	2.0	1×2	1.2	Cellular Phone
ABS	10.0	2×4	1.6	CD Housing Industry
ABS	7.0	4×4	1.2	P- Case
ABS	15.0	1×2	1.0	Cellular Phone
ABS	10.0	2×4	1.0	Cellular Phone
ABS	10.0	2×4	1.6	Cabinet between CT480 inside
ABS	15.0	1×2	1.0	CASE-FRONT V-374(No.1)
ABS	10.0	2×2	1.6	AGENT
ABS	23.5	1×4	1.6	A chassis of CD-ROM
ABS	12.0	2×2	1.0	Printer Bobbin
ABS	50.0	2×2	1.2	Portable CD
ABS	6.0	4×4	1.2	Portable CD
ABS	15.0	2×2	1.0	Copy Part
ABS	15.0	4×4	1.2	DVD Mecha Part
ABS/PC	20.0	2×2	1.6	Cover-Agent
Heat-resistant ABS	50.0	2×2	1.2	Portable SD
Heat-resistant ABS	10.0	2×4	1.6	Portable CD Part
66PA	0.5	20×20	1.0	Unity Belt
66PA	0.3	20×20	1.0	Spray Part
PA66	1.0	25×25	1.0	Car Unity Belt
PC	2.0	2×4	1.2	Batt for Carrying
PC	20.8	4×4	1.6	Tray for CD
PC	1.0	2×4	1.2	Carrying Battery
PC	6.0	2×2	1.0	Cellular Phone Part
PC	5.0	2×2	1.6	Battery for Video Camera
PC	5.0	2×2	1.6	Battery Part
PC	2.5	32×8	1.6	Medical Care Part
PC	10.0	2×2	1.6	Battery Case
PC	3.0	2×4	1.2	AA024 Cover
PC/ABS	5.0	4×4	1.2	Dry Cell Case
PC/ABS	20.0	2×2	1.6	Cellular Phone
POM	0.5	8×8	1.0	Copy Part
PBT	3.5	16×16	1.0	Fluorescent Lamp
TPE	1.0	8×8	1.0	Car Door Part
TPE	5.0	16×16	1.6	Intravenous Feeding Cap
TPE	1.0	4×4	1.0	Toothbrush Grip ?
TPE	0.8	16×16	1.0	Printer Part
TPE	0.3	16×16	1.0	Printer Part
TPE	0.7	16×16	1.6	Printer Part
LCP(GF)	1.6	4×4	1.6	SOCKET of CPU