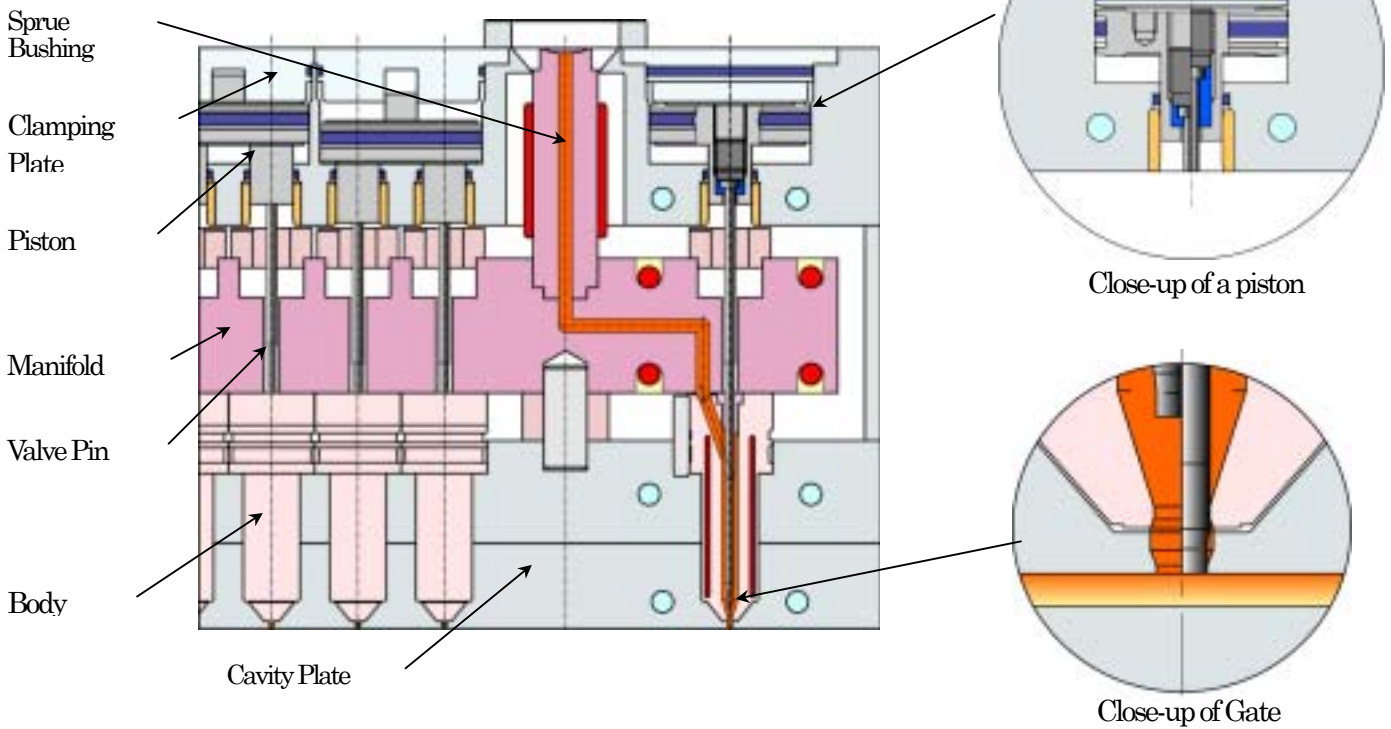
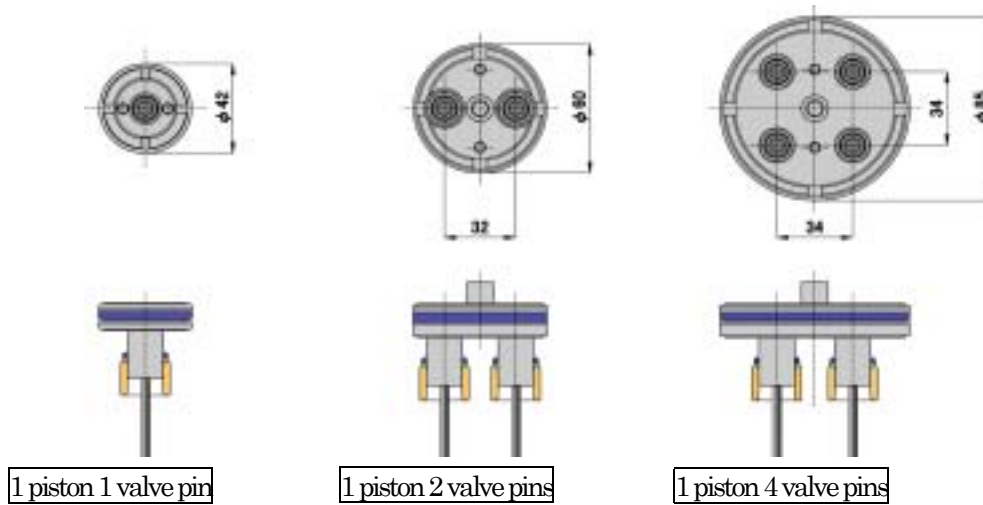


SV32 Compact Valve System

Structures of Hot Runner System



Pistons



1 piston 1 valve pin

1 piston 2 valve pins

1 piston 4 valve pins

Feature

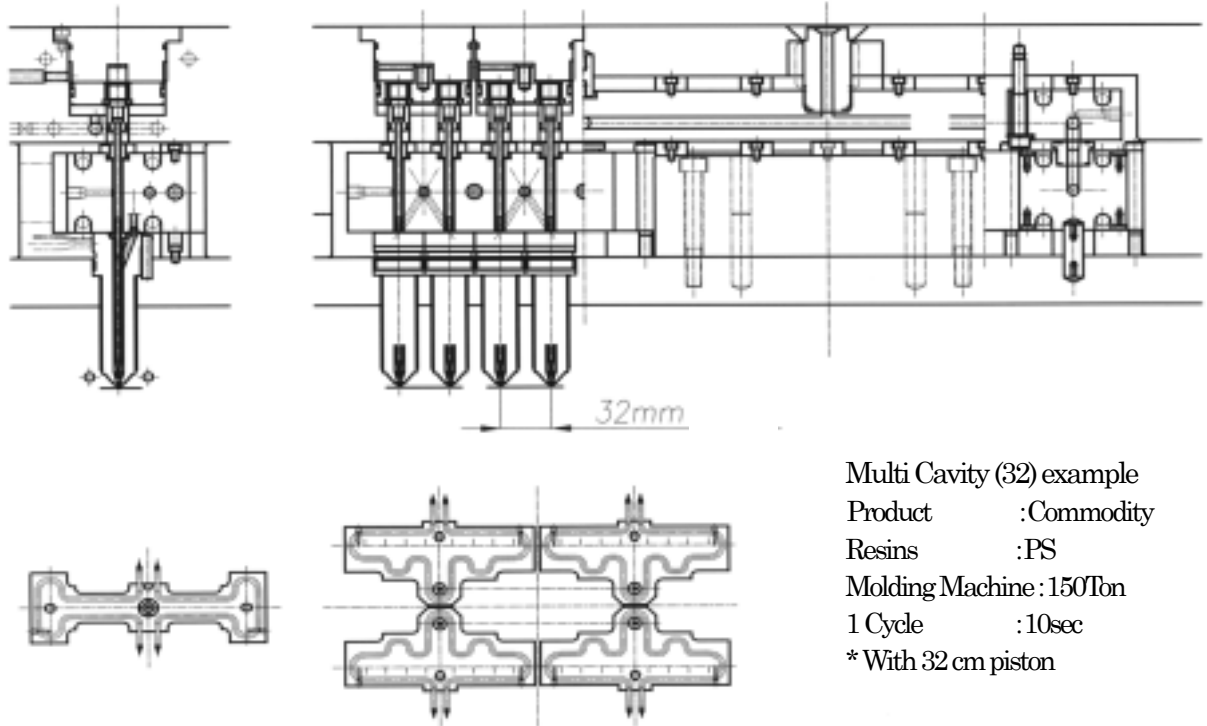
1. Suitable for wide range operations from general resins molding to general engineering plastic molding. (Without Tip Heater)
2. Compact version of SVP model.
 - Minimum pitch: 34 mm (square pitch)
 - Multi cavity with small pitch
3. Reinforced resins can also be processed.
4. "Steady Brace" system on the valve pins.
 - Prevents the gate and pin from wear and tear or damage.
5. Easy adjustment
 - Fine adjustment and change of the valve pin can be done on the molding machine.

Specification

1. Body Heater: (200V to 240V (AC))
2. Controller : Exclusive SH Controller (Consult us for the compatibility of the other manufacture's controller.)
3. Drive Force Air Pressure (5kgf/cm²)

SV32 Compact Valve System

Sample blue print for Manifold



Multi Cavity (32) example
 Product :Commodity
 Resins :PS
 Molding Machine :150Ton
 1 Cycle :10sec
 * With 32 cm piston

Performance Report

Resins	Product Weight(g)	Cavity × Gate	Gate Diameter(mm)	Purpose
PE	2.0	2×2	1.2	Copy Machine Part
PE	2.0	4×4	1.2	Iron Part
LDPE	5.0	24×24	1.0	Milk Cap
LDPE	5.0	24×24	1.0	Container lid
LDPE	5.0	1×1	1.0	Cap
LDPE	2.0	24×24	1.0	Milk Cap
HDPE	8.0	8×8	1.0	Food Container Lid
PP	10.0	8×8	1.0	Cap for Food
PP	11.2	8×8	1.2	Ink Tank the main Body
PP	1.0	8×8	1.0	LBP Part
PP	40.0	2×4	1.6	Case for DVD
PP	1.5	16×16	1.0	Printer Ink Tank
PP	0.4	16×16	1.0	Chimney Cap / Cover
PP	8.0	8×8	1.0	Daily Necessities
PP	8.0	4×4	1.0	Daily Necessities
PP	0.1	4×4	1.0	OA Part
PP	20.0	2×2	1.2	Container
PP	32.0	4×4	1.2	Toner Part
PP	1.5	16×16	1.0	Ink Tank
PP	17.4	2×4	1.2	Daily Necessities
PP	8.0	8×8	1.2	Printer Ink Tank
PP	20.0	12×12	1.2	Food Cap

Resins	Product Weight(g)	Cavity × Gate	Gate Diameter(mm)	Purpose
PP	30.0	4×8	1.6	DVD PP CASE
PP	15.0	6×6	1.6	Contact Lens Case
PP	1.5	16×16	1.0	Printer
PP	3.0	16×16	1.6	Motor Part
PP	30.0	16×16	1.6	Air-Conditioner Part
PP	1.5	16×16	1.6	Printer Part
PS	50.0	2×2	1.6	Case for CD
PS	7.0	4×4	1.2	P- Case
PS	14.8	8×8	1.6	CD
PS	13.0	4×4	1.6	Cup
PS	11.0	4×4	1.2	Medical Care Part
PS	2.3	32×32	1.2	Camera Film Wick
HiPS	28.0	2×2	1.6	CD Tray
GPPS	1.9	12×12	0.9	Cellular Phone
ABS	2.0	1×2	1.2	Cellular Phone
ABS	10.0	2×4	1.6	CD Housing Industry
ABS	7.0	4×4	1.2	P- Case
ABS	15.0	1×2	1.0	Cellular Phone
ABS	10.0	2×4	1.0	Cellular Phone
ABS	10.0	2×4	1.6	Cabinet between CT480 inside
ABS	15.0	1×2	1.0	CASE-FRONT V-374(No.1)
ABS	10.0	2×2	1.6	AGENT
ABS	23.5	1×4	1.6	A chassis of CD-ROM
ABS	12.0	2×2	1.0	Printer Bobbin
ABS	50.0	2×2	1.2	Portable CD
ABS	6.0	4×4	1.2	Portable CD
ABS	15.0	2×2	1.0	Copy Part
ABS	15.0	4×4	1.2	DVD Mecha Part
ABS/PC	20.0	2×2	1.6	Cover-Agent
Heat-resistant ABS	50.0	2×2	1.2	Portable SD
Heat-resistant ABS	10.0	2×4	1.6	Portable CD Part
66PA	0.5	20×20	1.0	Unity Belt
66PA	0.3	20×20	1.0	Spray Part
PA66	1.0	25×25	1.0	Car Unity Belt
PC	2.0	2×4	1.2	Batt for Carrying
PC	20.8	4×4	1.6	Tray for CD
PC	1.0	2×4	1.2	Carrying Battery
PC	6.0	2×2	1.0	Cellular Phone Part
PC	5.0	2×2	1.6	Battery for Video Camera
PC	5.0	2×2	1.6	Battery Part
PC	2.5	32×8	1.6	Medical Care Part
PC	10.0	2×2	1.6	Battery Case
PC	3.0	2×4	1.2	AA024 Cover
PC/ABS	5.0	4×4	1.2	Dry Cell Case
PC/ABS	20.0	2×2	1.6	Cellular Phone
POM	0.5	8×8	1.0	Copy Part
PBT	3.5	16×16	1.0	Fluorescent Lamp
TPE	1.0	8×8	1.0	Car Door Part
TPE	5.0	16×16	1.6	Intravenous Feeding Cap
TPE	1.0	4×4	1.0	Toothbrush Grip ?
TPE	0.8	16×16	1.0	Printer Part
TPE	0.3	16×16	1.0	Printer Part
TPE	0.7	16×16	1.6	Printer Part
LCP(GF)	1.6	4×4	1.6	SOCKET of CPU