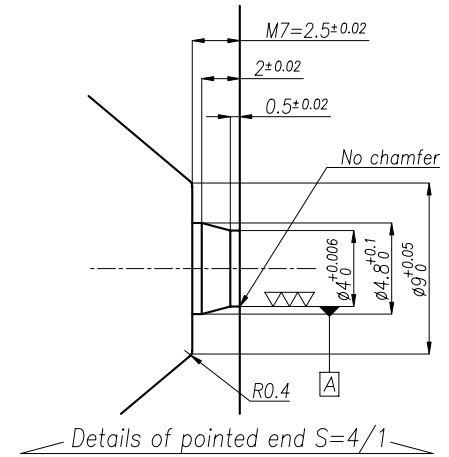
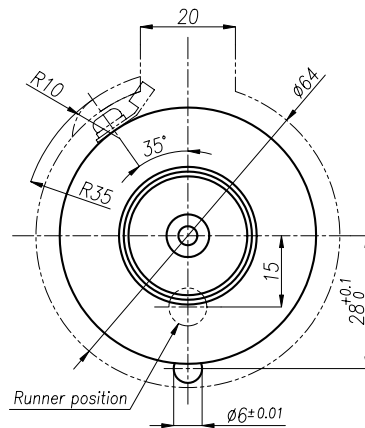
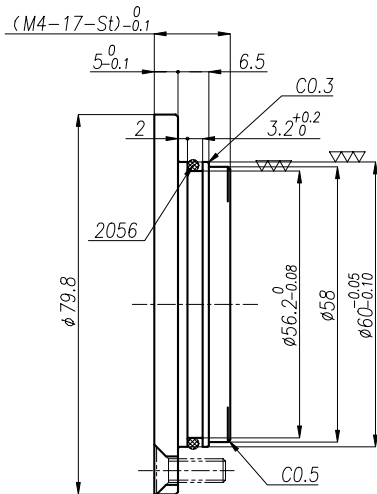
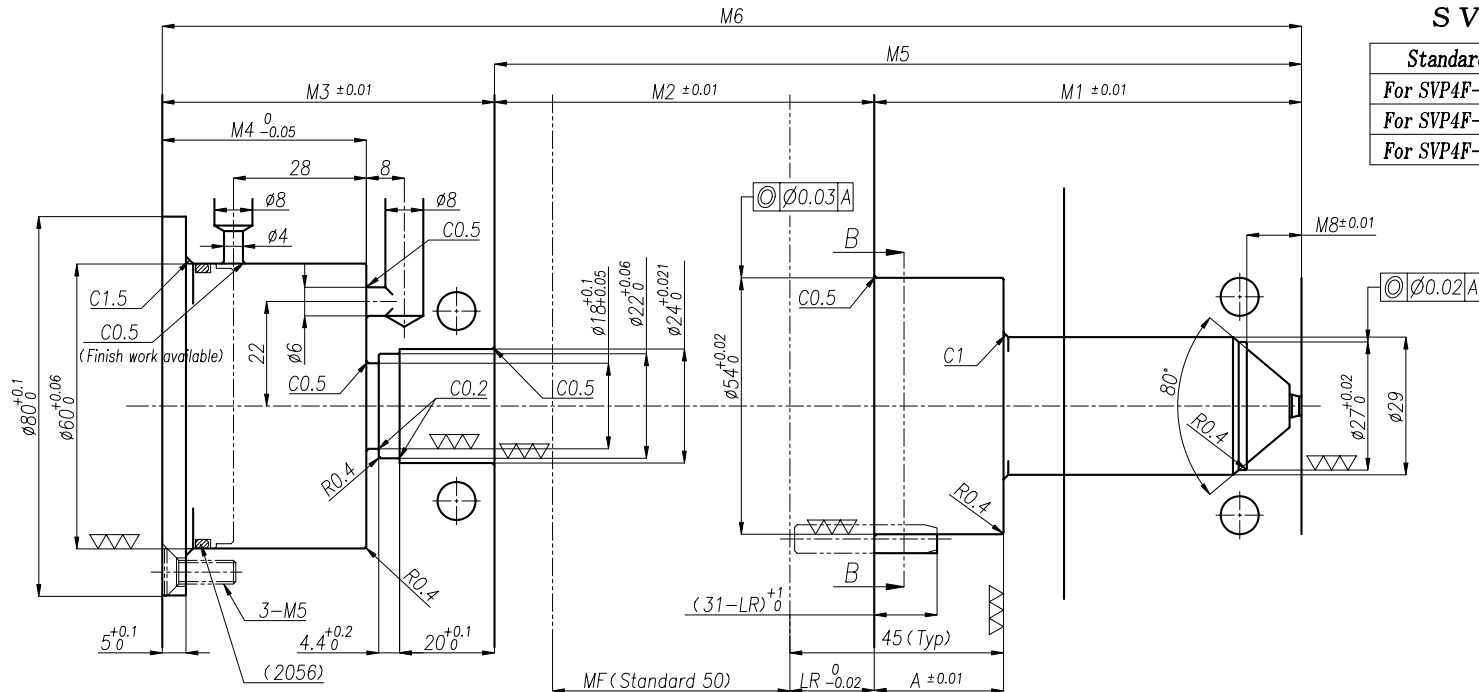


# SVP4F Mold machining drawing (∅ 4.0)

SVP4F Base dimension

| Standard      | M1  | M2 | M3 | M5  | M6  |
|---------------|-----|----|----|-----|-----|
| For SVP4F-85  | 70  |    |    | 150 | 220 |
| For SVP4F-105 | 90  | 80 | 70 | 170 | 240 |
| For SVP4F-125 | 110 |    |    | 190 | 260 |



<Note>

- \*1: Steel atgate portion need to be hardened (HRC 50 or higher)
- \*2: Depends on height of lower riser, valve lead wire exit groove must be processed on the back up plate.

| Processing condition | Depth(H)               | Groove width(W) | O.D.(D) | Remark  |
|----------------------|------------------------|-----------------|---------|---|
| LR>16                | Additional processing. |                 |         |   |
| LR<16                | 16-LR                  | 20              | ∅ 64    |   |
| LR<13                | 16-LR                  | 20              | ∅ 64    | Earth lead wire terminal exit groove must be processed as well.<br>Depth = 13-LR, Radius 35 |

| Tolerances unless Specified |       |
|-----------------------------|-------|
| Dimension                   | Angle |
| ±0.1                        | ±0.5° |

Cylinder cap (Reference design)  
(To be arranged by customer)  
St: Cylinder stroke

Section B-B  
--- Cut away machining