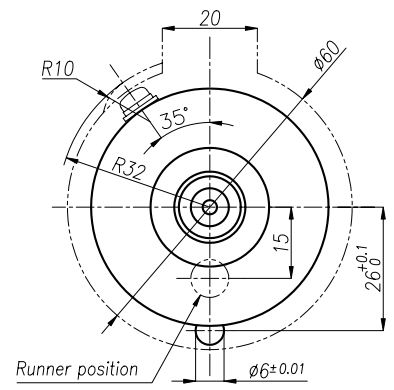
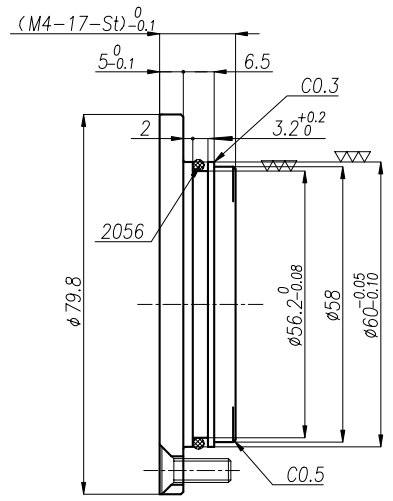
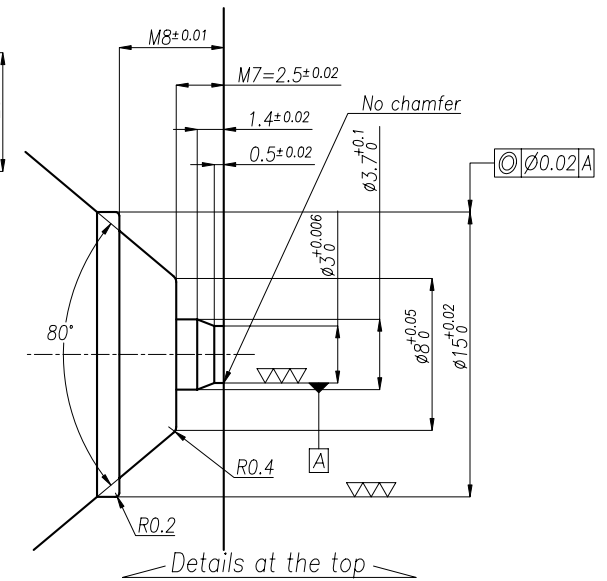
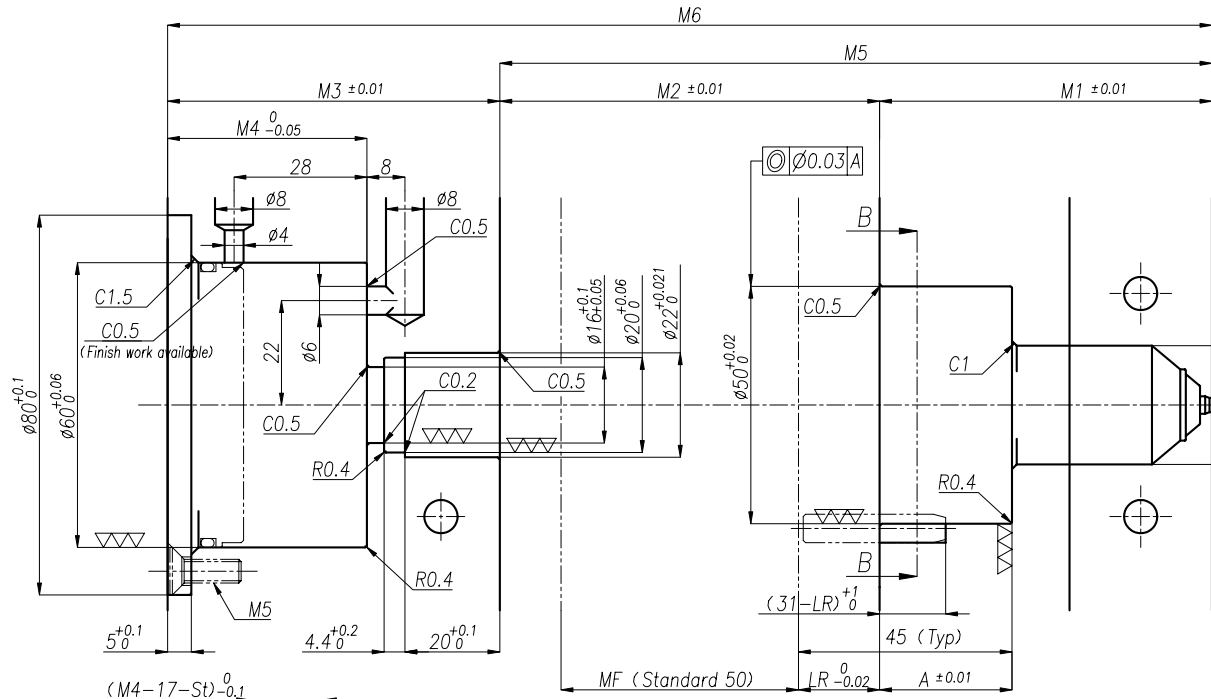


6 SVP3F Mold machining drawing (φ 3.0)

SVP3F Base dimension

Standard	M1	M2	M3	M5	M6
For SVP3F-85	70			150	220
For SVP3F-105	90	80	70	170	240
For SVP3F-125	110			190	260



Tolerances unless Specified	
Dimension	Angle
±0.1*	±0.5°

Cylinder cap (Reference design)
(To be arranged by customer)
St: Cylinder stroke

Section B-B
--- Cut away machining

<Note>

- *1: Steel atgate portion need to be hardened (HRC 50 or higher)
- *2: Depends on height of lower riser, valve lead wire exit groove must be processed on the back up plate.

Processing condition	Depth(H)	Groove width(W)	O.D.(D)	Remark
LR>16	Additional processing.			
LR<16	16-LR	20	φ 60	
LR<11	16-LR	20	φ 60	Earth lecd wire terminal exit groove must be processed as well. Depth = 13-LR, Radius 32